

## BRE20SY

REPLACES: 19.02.19  
REVISED: 07.11.19

### FITTING INSTRUCTIONS

#### RENAULT MASTER 06/13-01/19 BIG TUBE PROTECTION BAR VEHICLE FRONTAL PROTECTION SYSTEM (VFPS) FOR AIR BAG & ADR COMPLIANT VEHICLES

Check installation hardware before commencing.

- 1 Lift bonnet.
- 2 Remove four T30 Torx head screws from top of grille, lift up grille to release lower clips and remove grille. **See figure 1.**
- 3 Remove headlight by removing three 10 mm head screws from inner edge of headlight, disconnect wiring. **See figure 2.**
- 4 Removing four T30 Torx head screws from top of bumper, two T 30 Torx head screws from under wheel arch per side, three T 30 Torx head screws from underside of bumper. Disconnect fog lights if required and remove bumper cover.
- 5 Remove four 16 mm head bolts from end of chassis rail per side and one 13mm head bolt from centre of bumper support and remove support. **See figure 3.**
- 6 Trim plastic bumper locator directly above chassis rail end to allow fitment of ECB steel mounting bracket. **See figure 4.**
- 7 Using ECB 4mm steel washer plate as a guide place on outside of chassis rail mark and drill two 10 mm holes through rail. On right hand side drill will drill through bracing for tow hook on inside of rail. Washer plate must be located as per photo. **See figure 5. Blow filings clear and treat all exposed metal with a rust inhibitor.**
- 8 Fit ECB steel gusset plate (supplied) onto inside of chassis rail using two 3/8 x 4 1/2 bolts, flat washers, spring washers and nuts (supplied) per side with nut and washer on wire for lower bolt. Use washer plate on outside of rail.  
  
**CAUTION: In lower hole bolt must go in this order.** Spring washer, 6 mm steel washer, and 4mm steel washer plate, through rail, 6mm steel gusset, nut and washer on wire. **See figure 6.**
- 9 Fit ECB steel mount onto chassis rail, centre to chassis rails and secure with original bolts. **See figure 7.**
- 10 Using ECB steel mount as a guide drill two 10mm holes through end of chassis rail and gusset per side. **See figure 8. Blow filings clear and treat all exposed metal with a rust inhibitor.** Fit two 3/8 x 11/2 bolts, flat washers, spring washers and nuts (supplied) (per side). **Tighten all bolts.**
- 11 Slots need to be cut into bumper for steel mount to protrude through. Mark from centre of bumper out 440mm and down 190mm, then mark out another 20 mm. Cut out with jigsaw or similar tool. **See figure 9.**
- 12 Refit bumper in the reverse step of 4. **See figure 10.**
- 13 Refit headlights and grille.

- 14 Attach 6mm clip lock trim (supplied) to mid skirt with join at bottom, attach 6mm clip lock trim (supplied) to top of ECB protection bar. **NOTE:** Trim off lower edge on an angle so trim will sit flush with end of protection bar. See figures 11, 12 and 13.
- 15 Fit ECB LED indicator / park lights into protection bar as per instructions supplied with the LED indicator kit. **NOTE: Ensure park light is to outside. See figure 14.**
- 16 Join extension section too ECB wiring harness using joiners (supplied). Cut to the appropriate length for the vehicle and splice ECB wiring harness into wiring harness behind headlight using cable locks (supplied). Ensure harness is clear of sharp edges and moving parts.
- 17 Fit protection bar onto steel mount and fix with bolts (supplied), four 9/16 x 1 1/2 Bolts, flat washers, spring washers and nuts (supplied) per side. Align protection bar with vehicle and **tighten all bolts. See figure 15 and 16.**

#### **ENSURE NUMBER PLATE IS CLEARLY VISABLE**

**Note:** When fitting/refitting the licence plate to the vehicle, ensure there is no obstruction to licence plate vision in accordance with local authorities. If required relocate licence plate to an alternate location.

#### **Further VFPS Notes:**

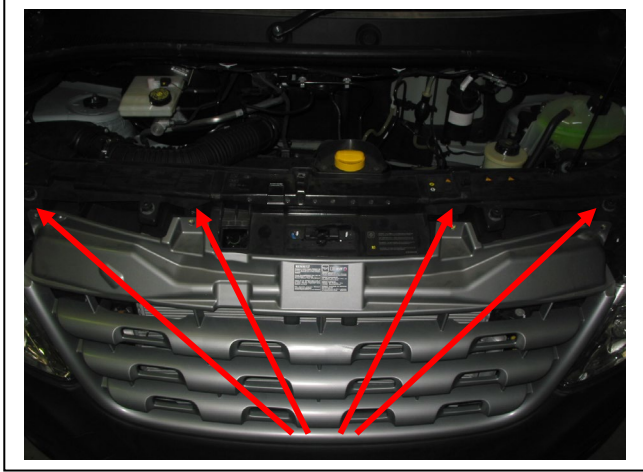
- a) Do not attach VFPS to the vehicle using anchorages not intended for this purpose (e.g. engine mounting bolts).
- b) Do not use this product for any vehicle make or model, other than those specified by the VFPS manufacturer.
- c) Do not remove the plaque or label from the VFPS.
- d) Do not modify the structure of the VFPS in any way.
- e) No accessory or fitment should project forward of the VFPS forward profile.
- f) **ENSURE THESE INSTRUCTIONS ARE LEFT WITH VEHICLE OWNER AND/OR OPERATOR.**

#### **IMPORTANT INFORMATION**

Periodically check bolts and nuts for correct tightness, especially if travelling on rough roads

#### **FITTING KIT**

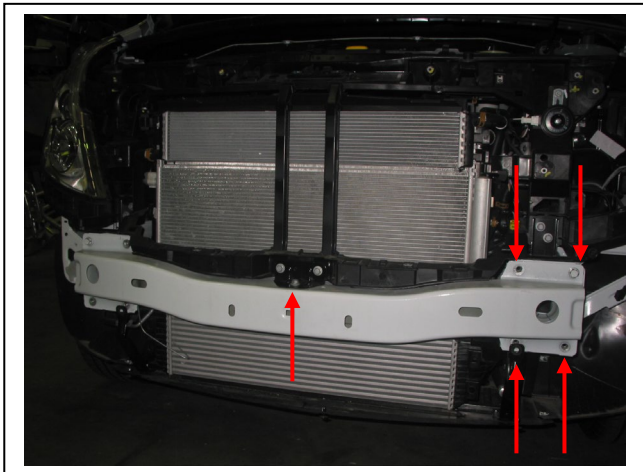
1 – Steel mounting bracket	14 – 3/8 flat washers
2 – Steel gusset 6mm	12 – 3/8 Spring washers
2 – Washer plate 4mm (template and washer)	6 – 3/8 nuts
1 – Tow pin M30 x 300mm	2 – 3/8 nut and washer on 300wire
2 – Steel washers 40 x 10 x 6	1 – ECB LED Indicator / Park light kit
8 – 9/16 x 1 1/2 bolts	2 – 500mm lengths 3 core wire
16 – 9/16 flat washers	6 – Crimp joiners
8 – 9/16 spring washers	6 – Cable locks
8 – 9/16 nuts	1 – 2100mm length 6 mm clip lock
4 – 3/8 x 4 1/2 bolts	2 – 950mm lengths 6mm clip lock
4 – 3/8 x 1 1/2 bolts	



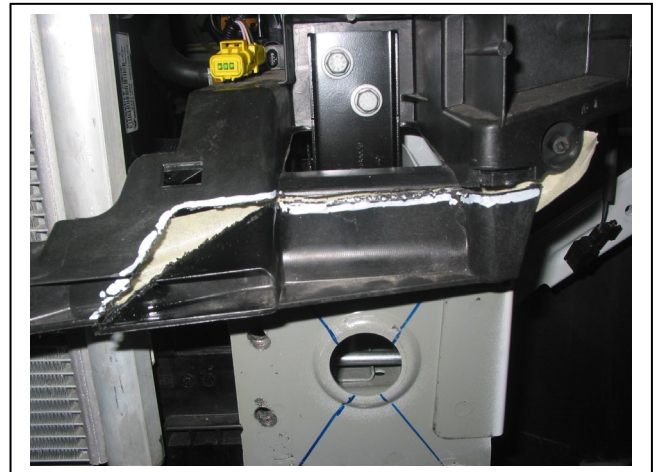
**Figure 1**



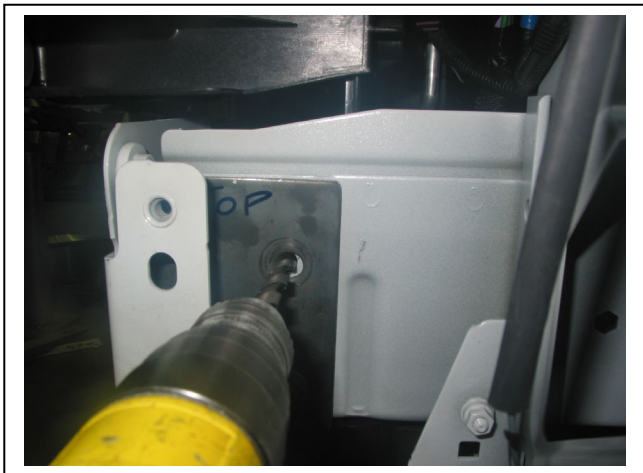
**Figure 2**



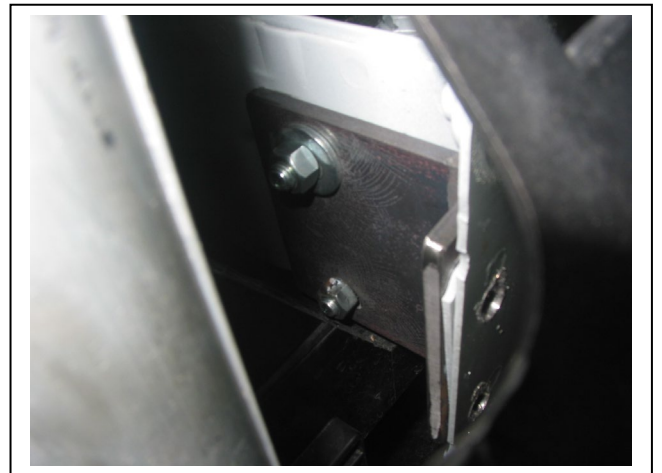
**Figure 3**



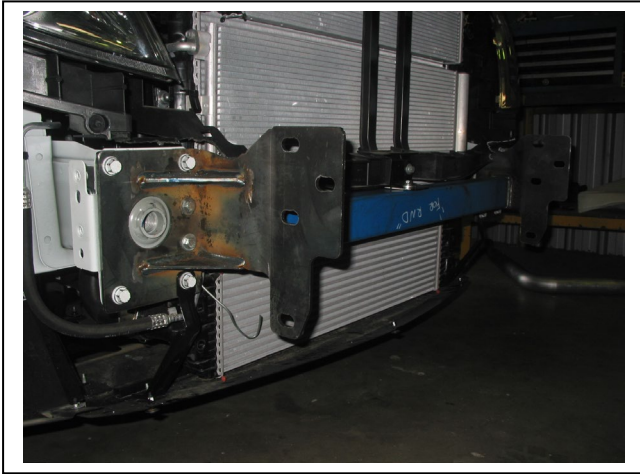
**Figure 4:** Remove section in front of chassis rail.



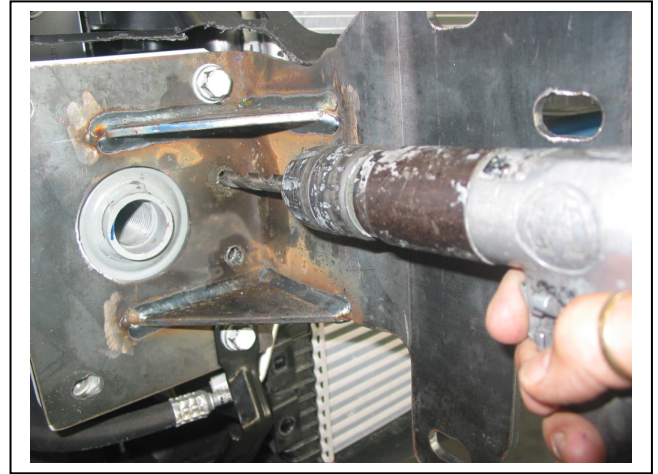
**Figure 5**



**Figure 6**



**Figure 7**



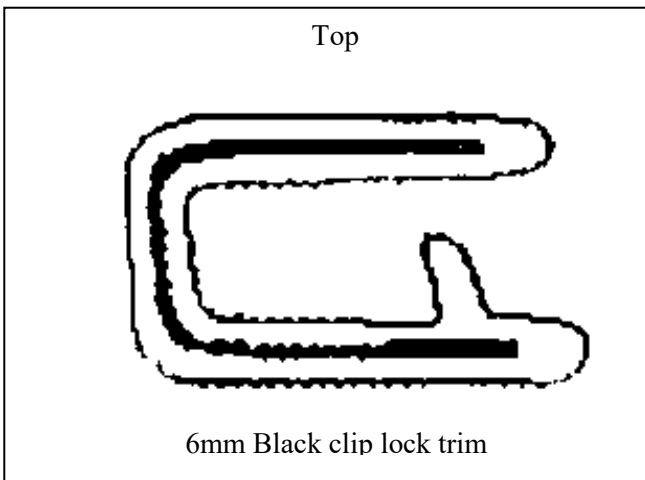
**Figure 8**



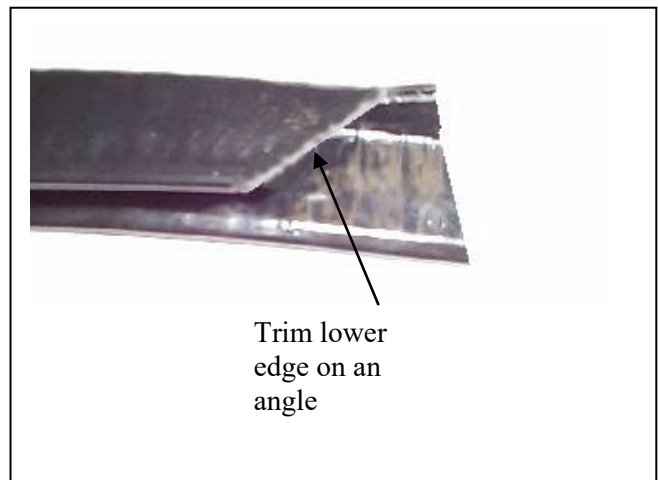
**Figure 9**



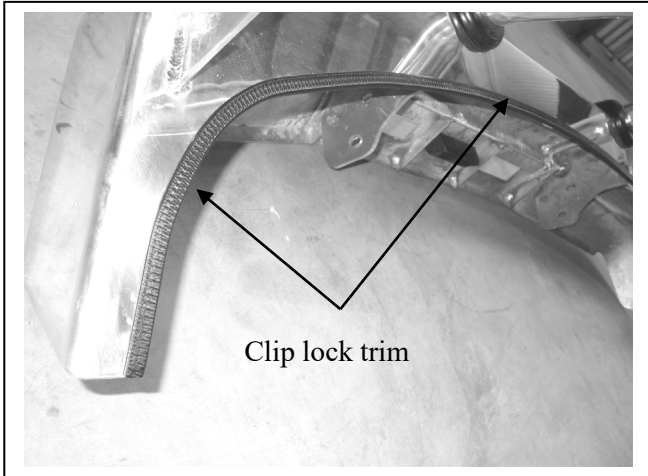
**Figure 10**



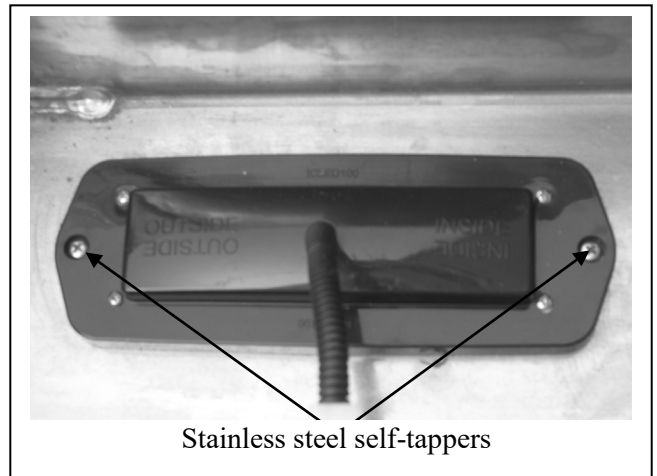
**Figure 11**



**Figure 12**



**Figure 13**



**Figure 14**



**Figure 15**



**Figure 16**



**Lighter  
Stronger  
Better!**

A: 29 Snook St Clontarf QLD 4019  
A: PO Box 122 Margate QLD 4019  
P: 07 3897 5700  
F: 07 3283 1168  
E: info@ecb.com.au  
W: ecb.com.au  
W: customalloy.com.au



## *We value your comments*

Dear Fitter,

ECB would like to know how you went with the installation of this product. We value your comment and may need to contact you to clarify some details so please complete your contact details clearly.

We would appreciate if you could complete as many of the following details as possible.

<b>Your Name:</b>	<b>Your contact No.</b>
<b>Product Part No.</b>	<b>Product Invoice No.</b>
<b>Product Description:</b>	<b>Make, model, and year of vehicle:</b>
<b>Product Work Order No.</b>	<b>Company your from/Company product purchased from:</b>

**Date of Fitment:** \_\_\_\_/\_\_\_\_/\_\_\_\_

Was the fitting hardware supplied complete?

Yes

No

If no what was not supplied

---

---

Did the installation go well?

Yes

No

Please provide comments

---

---

---

Please draw diagrams if you need to.

**Post to**  
Reply Paid 122  
PO Box 122  
Margate QLD 4019

**Fax to**  
(07) 3283 1168

## DESPATCH CHECKLIST BRE20SY

Work Order #		<b>See other side of this page for photos of all mounts</b>
Finish:		
Transport:		
Due Date:		

- OC.....1 – Steel mounting bracket.
- OC..... 2 – 6mm steel gussets.
- OC.....1 – Tow pin (M30 x 300mm)
- OC.....1 – Bolt Kit.
- OC.....2 – ECB Overrides
- WR.....1 – Steel mounting bracket – **Fitted to Bar**
- WR.....2 – 6mm steel gussets – **Taped with bolt Kit**
- WR.....1 – Bolt Kit – **Taped inside wing**
- WR.....1 – Tow pin (M30 x 300mm) – **Taped with bolt Kit**
- WR.....2 – ECB Overrides – **Fitted to Bar**



**Is this product “the best it can be” Yes**  
If **NO** fix before continuing

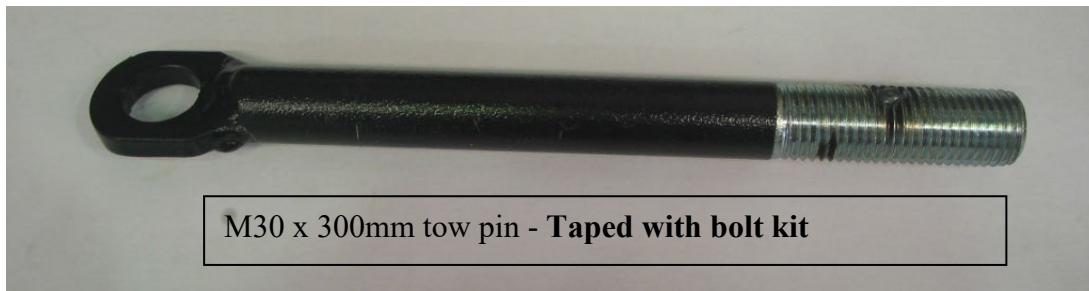
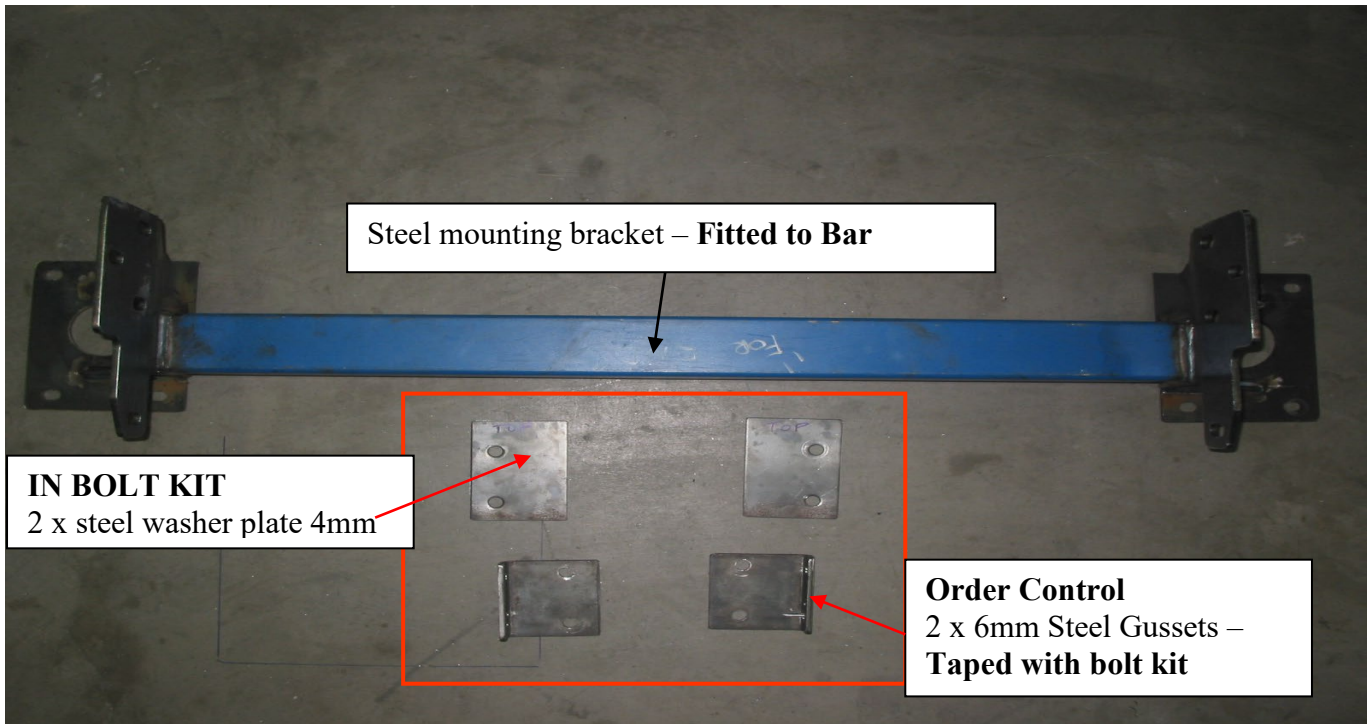
\_\_\_\_\_  
Wrapper's initials / Checker initials

All parts checked and completed by:

Nut and bolts: \_\_\_\_\_ Date    /    /   

Order control: \_\_\_\_\_ Date    /    /   

Final wrap check: \_\_\_\_\_ Date    /    /



\_\_\_\_\_  
Wrapper's initials / Checker initials